

PROPOSED DECONSTRUCTION OF ELECTRICAL-PLANT WORKSHOP AND CABRO - ELDORLET.

ITEM	DESCRIPTION	QTY	UNIT	RATE	AMOUNT	
					SIS	CT
<b>CABROLAYING</b>						
A	Allow for survey and determination for levels for the Cabro area.	ITEM	ITEM			
B	Ditto County government approvals, NEMA, NCA and any other statutory requirements deemed necessary for the entire scope of the project.	ITEM	ITEM			
C	Allow for removal of Tree Stumps girth not exceeding 600mm	3	NO			
D	Clear site including removal of vegetation and any other deleterious materials from site and cart away	5500	SM			
<b>All Provisional</b>						
E	Excavate commencing from the ground level not exceeding 1.5m deep (average).	6600	CM			
F	Cart away from site excavated spoil away from site to designated council approved locations.	5500	CM			
G	Fill up excavation in approved hardcore to make up levels and compact mechanically in layers not exceeding 300mm deep	5000	CM			
H	Supply and spread to level 50mm thick quarry dust as binding to hardcore surfaces. Rate to include surface treatment for vegetation.	5500	SM			
J	Supply, lay and fix 80mm thick Heavy duty cabro paving blocks on 50mm thick quarry dust (m) and compact by surface vibration.	5500	SM			
<b>Kerbs Stones (Supply and Fix)</b>						
K	Excavate for, provide and place 100 x 125mm class 25/20 precast concrete flush kerbs haunched in 150mm thick class 15/20 concrete base bedding and mortar jointed in support to pavement.	200	LM			
	Supply and lay 600 x 600mm paving slabs on murrum levelled surface as directed by the client.	80	SM			
L	Provide approved refracted white paint and paint 100 mm wide white lines at parking area as directed by the client.	ITEM	ITEM			
M	Approved refracted yellow paint and paint 100 mm wide yellow centre lines on the kerbs as directed by the client.	ITEM	ITEM			
N	Excavate strip foundation commencing from the ground level not exceeding 1.5m deep (average).	16	CM			
P	Reinforced Vibrated strip foundation 1:2:4	5	CM			
Q	Steel reinforcement including cutting, bending etc Y 12	90	LM			
	Y8 @ 200 center to centre	135	LM			
R	Masonry retaining wall 1.2 m high average with hoop irons in alternate courses, plastered with fair finish face with Concrete coping twice throated as directed by client.	75	SM			
<b>TOTAL CARRIED TO COLLECTION</b>						

ITEM	DESCRIPTION	QTY	UNIT	RATE	AMOUNT	
					SHS	CI
A	Allow for Water for works for cabro, wall, oil sump and Workshop construction.	ITEM	ITEM			
B	Allow for making good all disturbed areas and installations in the entire site.	ITEM	ITEM			
	<b>MEZZANINE FLOOR CONSTRUCTION</b> <u>All materials and workmanship shall conform with the requirement of BS 449 and shall include all necessary cutting, welding, bolting, pinning, lagging and fixing all to Client's approval.</u>					
C	Allow for demolitions to masonry wall within the workshop Load and cart away arising debris	90	SM			
D	Excavate for stanchion bases commencing from concrete floor finished level depth not exceeding 1.5m	18	CM			
E	50mm binding to pils <u>Vibrated reinforced concrete class 20/20 (1:2:4/25) as described in:</u>	12	SM			
F	300 mm thick Stanchion bases	4	CM			
G	Column	1	CM			
H	Sawn formwork for: Vertical Sides of foundation columns	12	SM			
	<u>Steel reinforcement bars including cutting, bending, spacer blocks, tying wires and fixing. High tensile bars to BS 4461; 12mm bars to:</u>					
I	Columns and column Bases	220	KG			
K	152 x 152 x 37Kg/m Universal Column to bases	3500	KG			
L	300 x 300 x 6mm as base plate welded to stanchion with a 6mm fillet weld(N15).	8	NO			
M	6mm fillet weld to connect stanchions and base plate	ITEM	ITEM			
N	19mm diameter X 381mm long H.D. bolts complete with flat washers as necessary.	32	NO			
P	150 x 150 x 8mm cleats welded to stanchion and base plate.	32	NO			
Q	50 X 50 X 8mm thick anchors welded on 19mm X 381mm long H.D bolts(N15)	32	NO			
R	Fill and Ram approved material to column pils.	5	CM			
S	152 x 152 x 37Kg/ m Universal Beams to floor	1700	KG			
T	100 x 50 x 10.1kg/ m Taper Flange channels at 600 cc to mezzanine floor	1070	KG			
U	Supply and fix 6mm thick checkered plate to mezzanine floor.	70	SM			
V	Ditto Blockboard to receive tiles (m.s)	70	SM			
<b>TOTAL CARRIED TO COLLECTION</b>						

ITEM	DESCRIPTION	QTY	UNIT	RATE	AMOUNT	
					SIIS	CT
A	Carefully demolish existing checkered plate staircase and set aside usable parts as directed by client					
B	Steel Staircase. All materials and workmanship shall conform with BS449 and shall include all necessary cutting, welding, bolting, pinning, joggling & fixing all to clients approval					
C	150 x 50 x 4mm section in strings and handrail including cutting and welding as requisite	40	LMI			
D	25x25 x 4mm SIIS to support treads: cut and welded	150	LMI			
E	6mm thick chequered plate in 300mm wide treads	10	SMI			
F	Ditto landings	1.5	SMI			
G	Ballustrade 25 x 25 x 3mm RHS in balustrades welded to string/waist Allow for Priming metal work before fixing and apply 2 coats oil paint after fixing	60	LMI			
J	Supply and fix coporate metal grill as provide in the dng. Framing to be in 50 x 50 SIIS and grills in 25 x 25 mm solid bars and allow for section to open as directed on site space between 25mm solid bars to be 150mm center to center.	70	SMI			
K	All glass in aluminium infill to be tempered as described 50mm aluminium partition in 2 equal panels: top panel infilled with 6mm tempered translucent glass; bottom panel infilled with 25mm thick faced blockboard all to client's satisfaction (blockboard to be in coporate blue	60	SMI			
L	Aluminium sliding window of 900 x 1200 complete with tempered glass each including framing and all necessary accessories	3	NO			
M	Aluminium door and accessories including 2 lever lock and hinges as required (900 x 2100)	1	NO			
N	Supply and fix plain Mdf partitions in timber framing (rns) to mezzanine floor	85	SMI			
P	Supply and fix cypress timber in horizontal and vertical framing to mezzanine floor	140	LMI			
Q	Apply three coats of silk ynnil paint to partition surfaces	85	LMI			
R	Ceiling Supply and fix including all accessories Roof dsalation material to existing TFS roof cover.	180	SMI			
S	Galvanized Cyclone Roof ventilators Super Eco 600	5	NO			
T	75 x 50 soft wood ceiling brandering at 600 centers	260	LMI			
U	Supply and fix softboard ceiling nailed to brandering	72	LMI			
V	Ditto conices 50mm wide with 2 labors	35	LMI			
W	Knot Frame and stop	35	LMI			
X	Apply 3 coats of irrilant white emulsion paint to soffits of ceiling	72	SMI			
TOTAL CARRIED TO COLLECTION						

ITEM	DESCRIPTION	QTY	UNIT	RATE	AMOUNT	
					SHS	CT
A	Ditto 50mm cornices	35	LM			
B	Ditto gloss paint to all metal surfaces	ITEM	ITEM			
C	Floors Hack floor and prepare surface to receive 25mm thick Terrazzo (ms)	180	SM			
D	Supply and fix metal dividing Strips to screeded floor as directed Strips to form boxes of approx. 1200 x 1200mm cc	300	LM			
E	25mm thick Coloured terrazzo to floor surface	180	SM			
F	Excavate commencing from Terrazzo floor finished level for Depth not exceeding 1.5m <u>OIL SUMP</u>	15	CM			
G	Extra over excavation for excavation in rock for all classes of rock at any depth.	3	CM			
H	Allow for all necessary planking and strutting.	ITEM	ITEM			
J	Allow for keeping excavation free from general water.	ITEM	ITEM			
K	Return, fill and ram approved murrum around foundations.	8	CM			
L	Load cart away surplus excavated materials and dispose in areas designated by Council.	15	CM			
M	50mm thick Blinding	12	SM			
N	Vibrated reinforced concrete class 24/20 (1:2:4/25) as described in:	4	CM			
P	Sides of Sump pit	4	CM			
Q	Sawn formwork to: Vertical Sides of Pit	11	SM			
R	Bed and sides of oil sump	180	KG			
S	Damp Proofing & Tanking - Mastic Asphalt 13mm thick mastic asphalt in 2 coats on concrete wall and base	30	SM			
T	50 x 50 angle line to joints	14	LM			
U	Construct 100mm brick wall to sides and floor of pit	25	SM			
V	12mm thick 1:2 wood float plaster to brick wall	25	SM			
W	Supply and fix ceramic tiles to wall and floor	25	SM			
X	Supply and fix removable sump pit cover. It two parts made of 75 x 50 mm steel angles 76 x 76 x 4.5 mm sections complete with 6mm thick flat steel grating all to clients satisfaction. 50 x 50 x 5mm sections to be at 300mm centre to centre.	5	SM			
Y	Apply 3 coats of oil paint to all metal surfaces.	5	SM			
<b>TOTAL CARRIED TO COLLECTION</b>						

ITEM	DESCRIPTION	QTY	UNIT	RATE	AMOUNT	
					SHS	CT
	<b>WORKS/IOF ANNEX</b>					
A	Allow for site hoarding <u>Substructures - All Provisional</u>	180	SM			
B	Clear the site of all debris and cart away the arising	250	SM			
C	Excavate for vegetable soil average 300mm deep and cart away the debris.	205	SM			
D	Excavate foundation trench commencing from stripped level but not exceeding 1.50M deep.	105	CM			
E	Ditto depth not exceeding 3.0m	25	CM			
F	Extra over excavation in all types of rock	20	CM			
G	Excavate Column footings commencing from stripped level but not exceeding 1.50M deep.	30	CM			
H	Ditto depth not exceeding 3.0m	9	CM			
I	Extra over excavation for excavation in rock for all classes of rock at any depth.	9	CM			
K	Allow for all necessary planking and strutting.	ITEM	ITEM			
L	Allow for keeping excavation free from general water.	ITEM	ITEM			
M	Return, fill and ram approved murrum around foundations.	150	CM			
N	Load cart away surplus excavated materials and dispose in areas designated by Council.	115	CM			
P	<u>Expansion joint</u> 40mm thick construction joint in flex cell or equal and approved expansion joint and 25 x 25 mm expedite sealer	15	SM			
Q	<u>Filling</u> Selected well compacted hardcore filling, compacted in layers of 150mm thick to satisfaction of client 50mm thick approved murrum blinding on hardcore fill.	77	CM			
R	Concrete. Mass Concrete Class P as described. Plain concrete (1:1.8:20mm aggregates) in 50mm thick blinding to foundation trenches. Ditto to column bases	65	SM			
	<u>Vibrated reinforced concrete class</u> <u>20/20 (1:2.4/25) as described in:</u>	33	SM			
S	Foundation Strips	14	CM			
T	Column bases	10	CM			
U	Column	4	CM			
V	300mm thick ground floor slab. Sawn formwork to: Vertical Sides of foundation columns	62	CM			
W	Slides of ground floor slab 150-225mm high	30	SM			
X	Mild steel bar to BS 4449; Double BRC mesh reference No. A112 weighing 2.22kg per square meter including 150mm minimum end and side lap, bends, tying wires and spacer blocks.	65	LM			
	<b>TOTAL CARRIED TO COLLECTION</b>	205	SM			

ITEM	DESCRIPTION	QTY	UNIT	RATE	AMOUNT	
					SIIS	CT
	Steel reinforcement bars including cutting, bonding, spacer blocks, tying wires and fixing. High tensile bars to BS 4461/22mm bars to:					
A	Column Bases	400	KG			
B	Columns	140	KG			
C	Y8 to Columns	150	KG			
D	Wide Strip foundation	550	KG			
E	Insecticide. Prepare and apply 'Premise 200 SC' or equal and approved insecticide to surfaces of blinding as per Manufacturer's written instructions.	250	SMI			
F	Damp Proofing. 1000 gauge polythene DPM laid on top of blinding including 200mm stile and end lap.	205	SMI			
G	200mm wide bituminous felt bedded in cement sand mortar (1:3) under the walls.	170	LAI			
H	Substructure Walling Natural stone walling in cement sand mortar (1:3) including and reinforced with 20 SWG Hoop iron in every alternating course.	156	SMI			
	<u>Superstructures</u>					
	<u>Stanchion Base</u>					
	All materials and workmanship shall confirm with the requirement of BS 449 and shall include all necessary cutting, welding, bolting, pinning, lugging and fixing all to Clients approval.					
J	Supply and fix 203 x 203 x 46kg/m Universal Column over 46kg/m and not exceeding 86kg/m 21 No. Stanchions each 6200 mm long	4662	KG			
K	300 x 300 x 6mm as base plate welded to stanchion with a 6mm fillet weld(A1.5).	21	NO			
L	6mm fillet weld to connect stanchions and base plate	ITEM	ITEM			
M	19mm diameter X 381mm long H.D. bolts complete with flat washers as necessary.	84	NO			
N	150 X 300 X 6mm beam plate for reinforcement extension welded to stanchion.	42	NO			
P	150 x 150 x 8mm cleats welded to stanchion and base plate.	42	NO			
Q	50 X 50 X 8mm thick anchors welded on 19mm X 381 mm long H.D bolts (M5)	42	NO			
R	Pilinth Area. 12mm thick cement sand mortar(1:3) render to pilinth. Prepare and apply three coats of bituminous paint to pilinth.	40	SMI			
S	Walling 200mm thick Natural stone walling in cement sand mortar (1:3) including and reinforced with 20 SWG Hoop iron in every alternating course.	350	SMI			
T	Extra cover for making horizontal keys and flush perpendicular to match existing	350	SMI			
U	Form work Sawn form work to soffit soffit of suspended slab.	150	SMI			
<b>TOTAL CARRIED TO COLLECTION</b>						

ITEM	DESCRIPTION	QTY	UNIT	RATE	AMOUNT	
					SIS	CT
	All materials and workmanship shall conform with the requirement of BS 449 and shall include all necessary cutting, welding, bolting, planing, lagging and fixing all to Clients approval.					
A	Supply and fix 203 x 203 x 46kg/m as Beams weight over 46kg/m and not exceeding 50kg/m in beams	6200	KG			
B	Steel reinforcement bars including cutting, bending, spacer blocks, tying wires and fixing. High tensile bars to BS 4461 to superstructure Mezzanine floor.					
	Y 12 Both ways	1350	KG			
C	Vibrated reinforced concrete class 20/20 (1:2:4/25) as described in:					
	Mezzanine floor	30	CM			
D	Supply and fix 100 x 75 X 3mm thick Z-purlins bolted / welded to stanchions, prime with one coat red oxide and 2 coats finishing aluminium oxide paint	250	LM			
	<b>Roof Construction and Cladding</b> The following in Two trusses spanning Approx. 7000mm and bolted Approx. 7,00mm high above finished floor. shall include all necessary cutting, welding, bolting, planing, lagging etc					
E	100x75x 8mm rolled steel rafters	200	LM			
F	Ditto Intermediate Rafters	100	LM			
G	75x50 struts and ties	230	LM			
H	150X100x6mm thick mild steel purlin cleats Weld to truss at 1800 c/c and prime with one coat red oxide and 2 coats finishing aluminium oxide	ITEM	ITEM			
J	Supply and erect 100x 75 X 8mm thick Z-purlins bolted to rafters and prime with one coat red oxide and 2 coats finishing aluminium oxide	465	LM			
K	16mm thick Steel stiffening members	60	LM			
L	12mm thick sag rods with 50mm alternations complete with nuts and spring washers and threaded on both sides	40	NO			
M	64 x64 X 6mm angle braces to second last truss					
N	200 X 400 X 6mm gusset plates	52	NO			
P	Supply and fix including all accessories Roof insulation material to existing IT5 roof cover.	320	SM			
Q	Supply and fix IT5 factory pre-painted gauge 26 roofing sheets to an approved colour laid with 94mm side laps and 150mm end laps fixed to steel 17' purlin (m/s) including J bolts washers and nuts and rubber cups at 600mm centers	530	SM			
R	Galvanized Cyclone Roof ventilators Super Eco 601	4	NO			
	Rainwater Goods					
	16 Gauge mild steel sheet welded and bolted to gutter stool Internally painted with 2 coats of black bituminous paint, externally with 1 coat of red oxide primer and 2 coats of finishing silver aluminium paint					
S	Purpose made box gutter 1200mm girth 50 x 6mm M15 gutter stools screwed / welded to rafters at 60mm c/c	48	LM			
T	Extra over for slopped ends.	4	NO			
U	Ditto for 150mm diameter holes in gutter.	8	NO			
V	Supply and fix 26 Gauge 500mm wide galvanized aluminium sheeting to roof verges and fascia	65	SM			
<b>TOTAL CARRIED TO COLLECTION</b>						



ITEM	DESCRIPTION	QTY	UNIT	RATE	AMOUNT	
					SIIS	CI
A	Ditto Roof ridge to appear	24	LMI			
B	Down pipes 150mm square GCI pipe grade A well secured to wall with brackets at 900mm centers.	48	LMI			
C	Extra over down pipe for swan neck.	8	NO			
D	Ditto but for slope.	8	NO			
E	<u>Painting generally.</u> Prepare and apply 2 coats of red oxide primer and apply 2 coats of silver aluminium finish on rainwater goods.	ITEM	ITEM			
F	<u>Windows and Gills</u> Composite purpose made mild steel casement window frames out of 25x25x 4 mm RIS Complete with fixed glass in approved putty all to approvals	3	NO			
G	Window size 900 x 1200 high overall complete with all necessary ironmongery	3	NO			
H	Ditto coporate gills 900 x 1200 as per attached drawing	8	NO			
I	Window size 600 x 750 mm high overall complete with all necessary ironmongery	8	NO			
J	Ditto coporate gills 600 x 750mm as per attached drawing	8	NO			
K	Prepare 2 coats of red oxide primer and apply 2 coats of matt finish paint on windows.	15	SMI			
L	250 x 50mm thick precast concrete weathered and throated window sill, reinforced, finished fair face on all exposed surfaces, bedded and jointed in cement sand mortar (1:4)	10	LMI			
M	Pelinet box size 100 x 100mm overall comprising 75 x 20mm top, 100 x 25mm front, 50 x 25mm bearers Pledged including fair return and boxed ends.	5	LMI			
N	Aluminium I - section sliding curtain track, screwed to underside of timber pelinet (M15) including 10 runners per linear metre and stopped ends.	5	LMI			
P	<u>Doors</u> <u>Supply and fix.</u> Composite purpose made mild steel sliding door frame fabricated out of 75 x 75 x 3mm RIS frame, complete with internal members fabricated out of 75 x 50 x 2mm RIS frame, covered with 14 gauge painted black sheet, including sliding gear complete fixed at the top and sliding rails at the bottom including 3 coats of 1st class matt permacrete <u>paint all to client's approval</u>	1	NO			
Q	Mild steel Single leaf door overall size 2,400 x 900mm complete with all necessary ironmongery and fixing accessories.	4	NO			
R	Three lever mortise lock as union to doors	6	NO			
S	Allow for padlock	4	NO			
T	Semi-solid flush door size 900 x 2100mm with quality veneer and hardwood flippings all round including 800 x 300mm high Metal bottom sheet water protection	9	NO			
U	150 x 50mm hardwood frame selected and kept clean with three labours.	40	LMI			
V	20 x 20mm camphor architrave twice rebated.	40	LMI			
W	20 x 20mm camphor quadrant twice rebated.	40	LMI			
X	Supply and fix roller shutter doors complete with rolling accessories, Framing, and leaf all as necessary. Overall size 2500 x 5000	2	NO			
<b>TOTAL CARRIED TO COLLECTION</b>						



ITEM	DESCRIPTION	QTY	UNIT	RATE	AMOUNT	
					SIS	CT
A	Supply and fix (All aluminium glass infill to be in tempered glass) 50mm aluminium partition in 2 equal panels: top panel infilled with 6mm translucent Tempered glass; bottom panel infilled with 25mm thick MDF faced blockboard all to client's satisfaction	50	SM1			
B	12mm thick veneered MDF partition to mezzanine floor Complete with framing (m.s)	95	SM1			
C	50 x 50 cypress framing in horizontal and vertical members	50	LM1			
D	Supply and fix Aluminium framed door 2100 x 900 mm properly secured including framing and 6mm glass complete with cylinder locks	3	NO			
	Ironmongery					
D	3-lever cylinder lock with lever handles as Union (ENG)	3	NO			
E	Approved aluminium 75mm long tailed latch lock	6	NO			
F	Ditto 100mm D handles.	12	NO			
G	Ditto coat hanger.	6	NO			
H	Rubber doorstop; rawl bolted to concrete.	7	NO			
I	150mm butt hinges.	36	PAIRS			
K	Door closer as (Briton 2003).	6	NO			
L	Prepare and knot coated surfaces, prime and stop, apply one undercoat and two coats of matt paint (as Crown) on wood.					
M	Door general surfaces.	40	SM1			
N	Frames not exceeding 150mm girth.	40	SM1			
P	Architrave ditto.	40	SM1			
Q	Quadrant ditto.	40	SM1			
R	Finishes Internal Finishes (Walling) Supply and fix	60	SM1			
S	Aluminium sliding window in 2 panes of 600 X 1200mm each including framing and all the accessories.	3	SM1			
	Internal Finishes Plaster					
T	13mm thick cement sand plaster (1:3) to walling to receive paint.	550	SM1			
U	3 coats of paint to plastered surfaces	550	SM1			
V	Ditto to receive ceramic tiles.	60	SM1			
	Ditto ditto to soffits of slab	150	SM1			
W	Prepare and apply three coats of 1st (as Crown) vinyl matt on Wall plastered surfaces.	490	SM1			
X	Ditto to soffits of slab.	150	SM1			
Y	300 x 300 mm coloured ceramic wall tiles in appropriate adhesive.	60	SM1			
<b>TOTAL CARRIED TO COLLECTION</b>						

ITEM	DESCRIPTION	QTY	UNIT	RATE	AMOUNT	
					SHS	CT
A	<u>Flooring</u> 20mm thick cement sand mortar (1:3) screed to receive Ceramic tiles finishes.	90	SM			
B	600 X 600mm polished granite tiles in appropriate adhesive.	70	SM			
C	30mm thick well polished terrazzo floor finish	145	SM			
D	30 x 3mm th. Metal dividing strips.	285	LM			
E	Coloured 300 x 300 mm Non slip ceramic floor tiles fixed with appropriate adhesive	90	SM			
F	<u>Ceiling</u> 75 x 50 soft wood ceiling brading at 600 centers	250	LM			
G	Supply and fix softboard ceiling nailed to brading.	250	SM			
H	Ditto cones 50mm wide with 2 labors	40	LM			
I	Knot Prime and stop	40	LM			
K	Apply 3 coats of brilliant white emulsion paint to soffits of ceiling	250	LM			
L	Ditto 50mm cones		ITEM			
M	<u>Kitchen</u> All for 12000 x 600 x 100mm thick concrete work top finished in 12mm thick polished granite with 5 No. low 5 No low level lockable cabinets and 2 No. high level cabinets all to clients approval		ITEM			
N	Supply and fix stainless steel single bowl kitchen sink including all the connection accessories and pillar lap as approved.	1	NO			
P	Allow for supplying and fixing 2 x 2000 litre plastic tank (Roto) including Platform and plumbing connection from existing supply to all the sanitary appliances		ITEM			
Q	Allow for sewer connection and necessary council approvals for sewer connections.		ITEM			
R	<u>Steel Staircase.</u> All materials and workmanship shall conform with BS449 and shall include all necessary cutting, welding, bolting, pinning, jugging & fixing all to clients approval	32	NO			
S	100 X 100 X 9mm SHS landing support	6	LM			
T	150 x 75x 6 mm section in strings and handrail including cutting and welding as requisite	24	LM			
U	100 x 25 x 6mm S.H.S. to support treads; cut and welded	90	LM			
V	6mm thick chequered plate in 300mm wide treads	10	SM			
W	Ditto landings	1.5	SM			
X	25 x 25 x 3mm RHS in balustrades welded to string/waist	40	LM			
Y	Allow for Priming metal work before fixing and apply 2 coats oilpaint after fixing		ITEM			
Z	Allow for landscaping in red soil and manure, approved grass, shrubs flowers and trees are directed by the client.	200	SM			
A1	Allow for maintenance for a period of six month from the date of handover					
<b>TOTAL CARRIED TO COLLECTION</b>						

ITEM	DESCRIPTION	QTY	UNIT	RATE	AMOUNT	
					\$/LS	CT
	<b>ELECTRICAL INSTALLATIONS LIGHTING POINTS AND SWITCHES</b>					
A	Allow for a prime cost sum for electrical works to be expended by the authority of the tender committee)	SUM	SUM		850,000	
	<b>PLUMBING WORKS</b>					
B	Allow for a prime cost sum for plumbing works/items to be expended by the authority of the tender committee)	SUM	SUM		650,000	
<b>TOTAL CARRIED TO COLLECTION</b>						



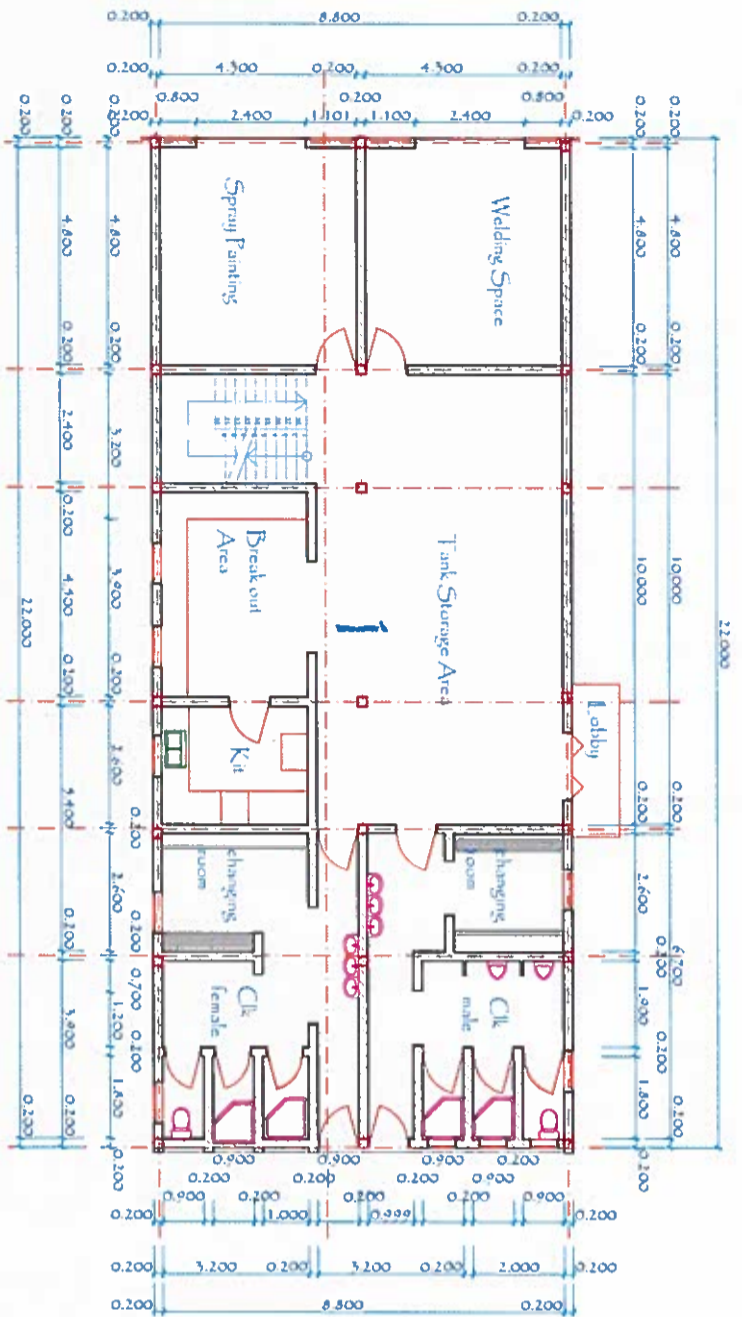
ITEM	DESCRIPTION	QTY	UNIT	RATE	AMOUNT	
					SHS	CT
A	Supply and Fix Twyford's Hindustan vitreous china wash hand basin size 500x400mm fixed on semi-concealed brackets ref.No.1200 complete with INo approved 12mm chrome plated water tap.	6	NO			
B	150x150mm semi-recessed "Twyford's" white toilet roll holder	3	NO			
C	White Twyford's classic high level WC suite comprising pan, heavy duty plastic seat and cover, ceramic cistern, flush pipe and trap.	3	NO			
D	Range of two urinal bowls with automatic cistern, stainless steel piping and divider as per arrangement shank	2	NO			
E	Drainage works 150mm diameter golden brown foul water pipe on and including 100mm thick plain concrete 1:3:6 hauch and all necessary fitting and connecting to main sewer line	45	LM			
F	Construct manhole to M.O.P.W. Specifications as specified in general specifications for building works works of 1976, sub-trade JO3 items 9240 to 9261 including 600 x 450 mm, light duty coated cast iron iron manhole cover frame	6	NO			
G	100 mm. Diameter cast iron gully trap complete with removable grating, water seal and concrete (1:3:6) bed and surround with steel or concrete cover including excavation and disposal.	2	NO			
H	Excavate trench not exceeding 1.5m deep and 600mm wide for 100mm diameter pipes part backfill part load and cart away	50	CM			
J	Allow for testing the whole of drainage installation after Completion to the satisfaction of the client	ITEM	ITEM			
TOTAL CARRIED TO COLLECTION						

ITEM	DESCRIPTION	QTY	UNIT	RATE	AMOUNT	
					SHS	CT
	<u>Schedule of rates - Electrical Installation</u> <u>Cost to Include Supply and Installation</u>					
A	Lighting point wired in 3x1.5mm PVC Insulated single core cables (SC) copper drawn in 20mm PVC heavy gauge conduits	1	NO			
B	Ditto in two way switching	1	NO			
C	Supply and fit the following switches as MK or crabtree on recessed switch boxes					
D	5 Amp one gang one way plate switch	1	NO			
E	5 Amp two gang two way plate switch	1	NO			
F	5 Amp three gang two way plate switch	1	NO			
G	1200mm 40w single fluorescent fittings	1	NO			
H	100w bulkhead fitting for security lights	1	NO			
J	13Amps sockets outlets wired in 3x2.5mm single core cables in 20mm PVC heavy duty concealed in walls Supply and install the following fittings as crabtree or equal and approved	1	NO			
K	13 Amp twin socket outlet	1	NO			
L	100 Amp 8 way consumer unit	1	NO			
M	5 Amps SP circuit breakers	1	NO			
N	Ditto 30 Amps	1	NO			
P	Allow for all earthing and testing to KPLC standards End of schedule of rates for Electrical works					
	<u>Schedule of rates - Plumbing Works</u> <u>Cost to Include Supply and Installation</u>					
Q	20mm gate valve as per pegler	1	NO			
R	15mm class B pipes including all necessary fittings including all the necessary chasing in wall	1	NO			
S	20mm class B pipes including all necessary fittings including all the necessary chasing in wall	1	NO			
T	12mm fittings socket nipple union flexible tubes 20mm fittings socket nipple union Reducing tees Backnuts Reducing bush 3/4 > 1/2	1 1 1 1 1 1 1 1 1 1 1 1 1	NO NO NO NO NO NO NO NO NO NO NO NO NO			

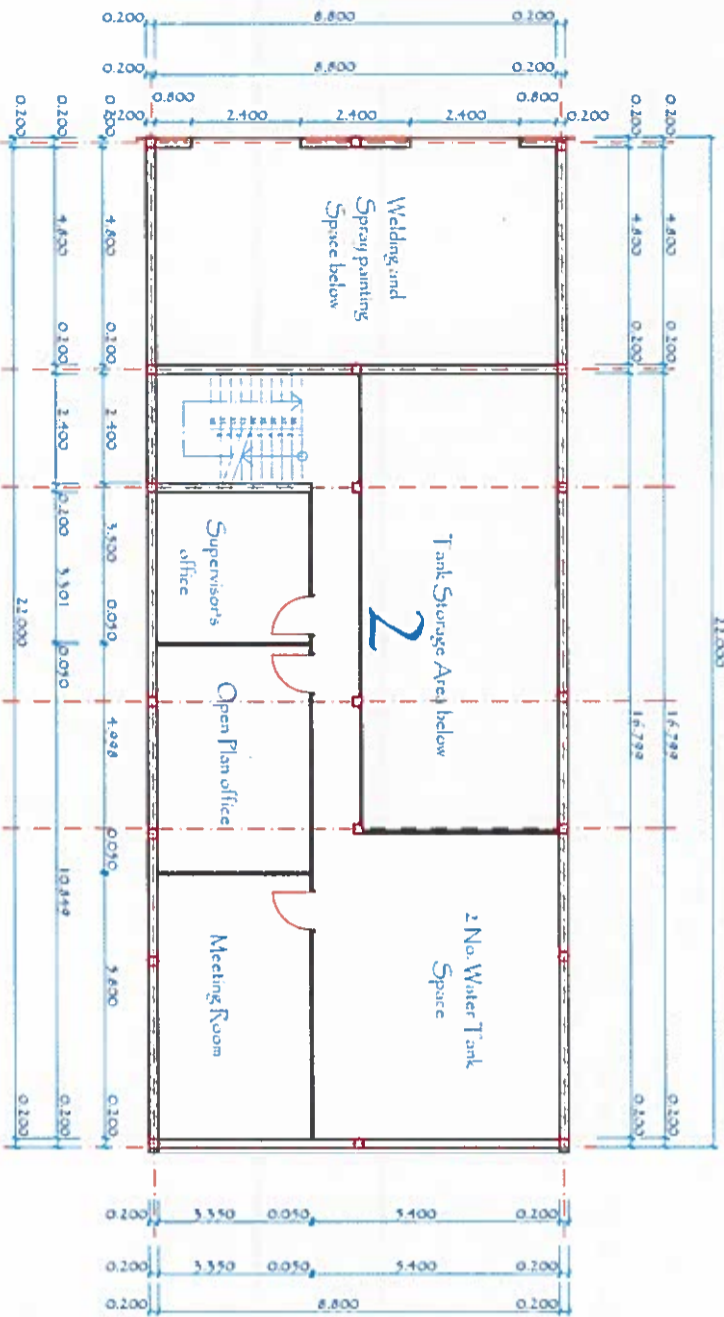
ITEM	DESCRIPTION	QTY	UNIT	RATE	AMOUNT	
					SHS	CT
A	38 mm. diameter H.T. pipe.	1	NO			
B	38 mm. access cap.	1	NO			
C	38 mm. bend.	1	NO			
D	100mm inspection bend	1	NO			
E	100mm PVC bend	1	NO			
F	38mm inspection tee	1	NO			
G	38 mm. equal Tee or branch.	1	NO			
H	38 mm. diameter bottle trap and waste complete with chain and plug	1	NO			
J	100 mm. diameter floor trap complete with seal and grating. End of schedule of rates for plumbing works	1	NO			



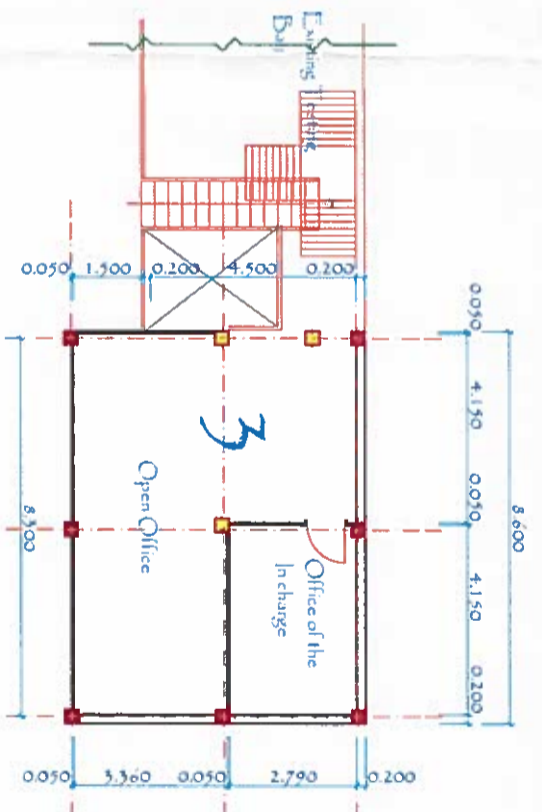
ITEM	DESCRIPTION	QTY	UNIT	RATE	AMOUNT	
					SHS	CT
<u>SUMMARY PAGE</u>						
	TOTAL CARRIED FROM PAGE 1					
	TOTAL CARRIED FROM PAGE 2					
	TOTAL CARRIED FROM PAGE 3					
	TOTAL CARRIED FROM PAGE 4					
	TOTAL CARRIED FROM PAGE 5					
	TOTAL CARRIED FROM PAGE 6					
	TOTAL CARRIED FROM PAGE 7					
	TOTAL CARRIED FROM PAGE 8					
	TOTAL CARRIED FROM PAGE 9					
	TOTAL CARRIED FROM PAGE 10					
	TOTAL CARRIED FROM PAGE 11					
	TOTAL CARRIED FROM PAGE 12					
	SUB TOTAL					
	ALLOW 16% VAT					
	TOTAL CARRIED TO FORM OF TENDER					
COMPANY STAMP						
Amount in words: .....						
Signed: .....						
Name: .....						
Address: .....						



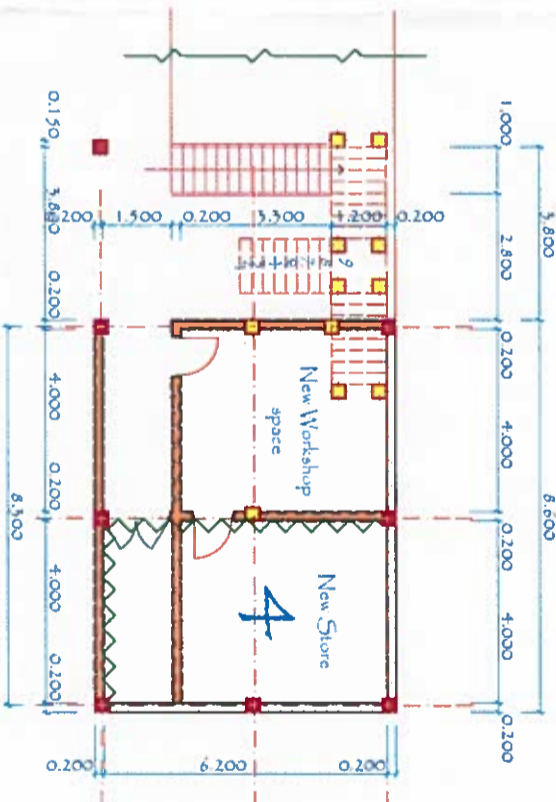
ELDOR ET E-PLANT WORKSHOP ANNEX - Ground Floor



ELDOR ET E-PLANT WORKSHOP ANNEX - Mezzanine Floor

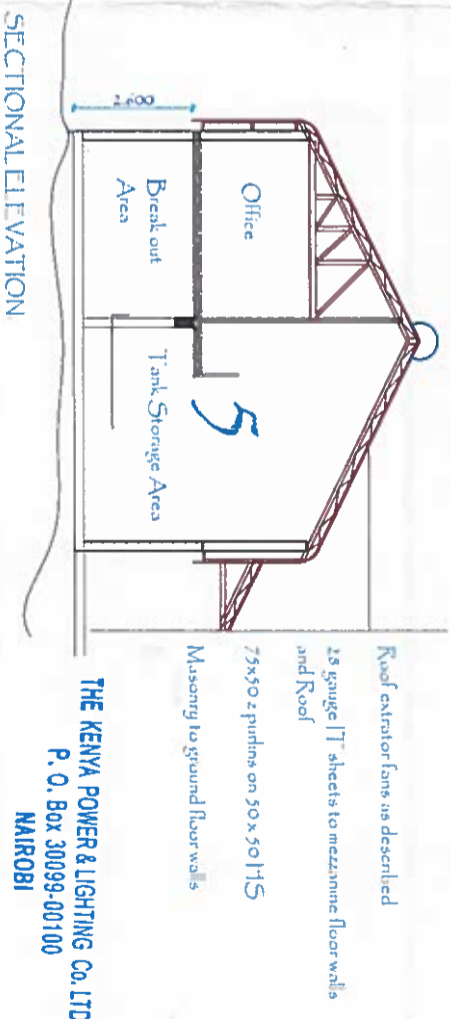


NEW OFFICES IN THE MEZZANINE FLOOR



GROUND FLOOR

- KEY**
- Grills in the New works
  - Walls to be demolished
  - New Stanchions
  - New aluminum partitions
  - Existing metal stair case to be demolished
  - Proposes new stair case to Mezzanine



SECTIONAL ELEVATION

THE KENYA POWER & LIGHTING CO. LTD.  
P. O. Box 30099-00100  
NAIROBI

**NOTE**  
THIS DRAWING IS A GUIDE TO BIDDERS, DETAILS FOR SCOPE ARE COVERED IN THE TENDER DOCUMENT

- KEY**
1. Ground Floor - Annex
  2. Mezzanine - Annex
  3. New workshop space existing workshop.
  4. New offices - existing workshop.
  5. Sectional elevation - Annex